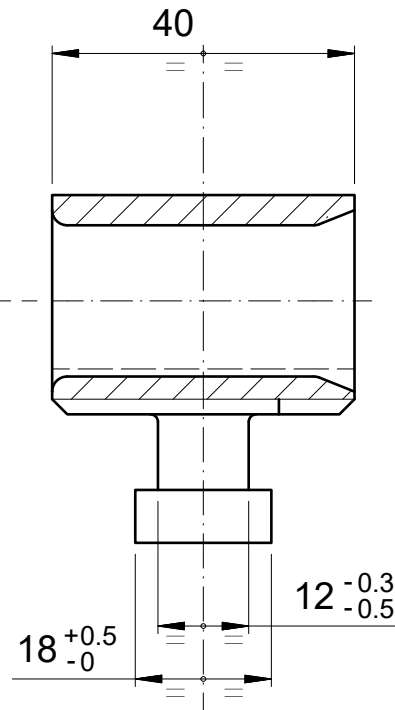
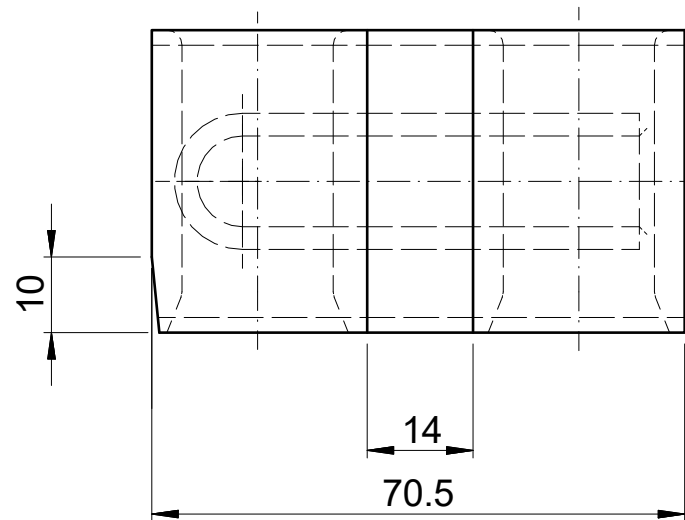
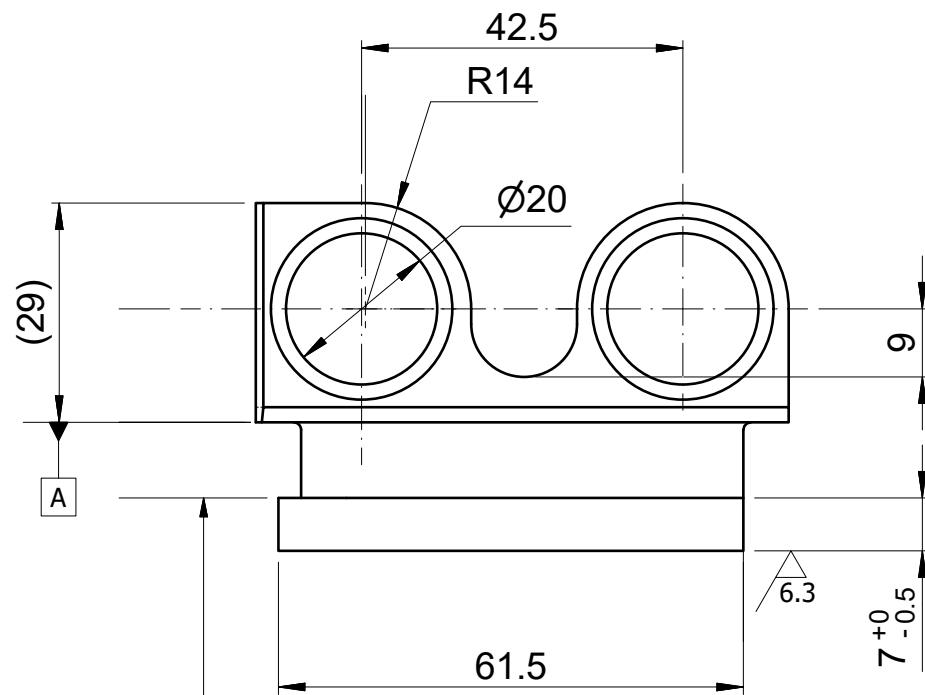


COMPUTER AIDED DESIGN - I



OBTAINED FROM CASTING
QUENCHING AND TEMPERING
Rp0.2=550-600 MPa

Rev.	Date	Revisions description	Drawn by	Checked by	Approved by
Material 1 (where not indicated on drawing)		State of supply Mat.1	Danieli Supply Std.	Supply Class	Pattern DB
X20Cr13 - EN 10088-3					18966
Material 2		State of supply Mat.2	Danieli Supply Std.	Supply Class	Casting code
					0.049962.Q
Material 3		State of supply Mat.3	Danieli Supply Std.	Supply Class	
Heat Treatment					
BON - QUENCHING AND TEMPERING					
On Drawing					
Symbol, SURFACE HARDNESS [HB] 240-270					
if required,					
Coating					
On Drawing					
Symbol, if required,					
Unquoted radius	Unquoted bevels	Dimensions without tolerance as per	Machinings	Prec.Class	Max.Welding Class
1 (mm)	0.5X45(mm)	DANIELI STD 2.4.103	✓[6.3] ✓ ✓ ✓ ✓	C	
Project Name					
				Job nr	
				Obtained from	
				Replaces	
Classification			INSERT		
			Weight (Kg) 0.4 J (Kgmm ²)		
Title				1:1	
DANIELI Part Number				Revision	
000-000-051-416				01	
CUSTOMER Part Number				Revision	
				Format	
				A3	
				Nr. of sheets	
				001	
				Sheet	
				001	
				Follow	
				/	

copyright c 2021 danieli & c. officine meccaniche s.p.a. - all rights reserved. confidential. property of danieli & c. officine meccaniche s.p.a. unauthorized reproduction, copying, distribution or any other use of the whole or any part of this documentation is strictly prohibited.

File drw0002200671.idw